



ANNAPOLIS FLEET

***2011 CRUISING
WITH GOOD COMPANY
GUIDE
for the
CHESAPEAKE BAY***

INCLUDES:

- Little Choptank River
- Potomac River
- St. Mary's River

May 14 – 21, 2011

Table of Contents	Page
Welcome From the Cruise Chairman	2
Cruise Committee Members	3
General Cruise Notes	4-5
Emergency Procedure and Contact Information	6-7
One-Page Summary	8
Daily Schedule Details	
Saturday	9
Sunday (Race 1 Day)	10
Monday	11
Tuesday (Race 2 Day)	12-13
Wednesday (Race 3 Day)	14-15
Map – St. Mary’s College	16
Thursday (Lay Day)	17
Map 1 – Historic St. Mary’s	18
Map 2 – Historic St. Mary’s	19
Friday	20
Saturday	21
Racing Notes	22
Who is Who on the Cruise	
Alphabetical Roster by Name	23
Alphabetical List by Yacht Name	25

WELCOME TO THE CORINTHIANS 2011 CHESAPEAKE SPRING CRUISE

The 2011 Chesapeake Spring Cruise was started by the Annapolis and Philadelphia Fleets in 1991. The Corinthians have been cruising the Chesapeake for many years; it is beautiful and offers almost an infinite number of places to visit. It is the Annapolis Fleet's privilege and honor to have the lead for this year's cruise. The Philadelphia Fleet has been a major component of the cruise committee and we thank them for providing considerable effort to make this cruise possible. Also, this year we are honored to have Carl Larson, Fred Wilson, and William de Neergaard, Past Masters of the Corinthians, join us.

The objective of this year's cruise is to have a relatively laid back environment with fewer organized activities with a focus on relaxation. Therefore, we have planned only three structured dinner evenings. We have also planned for three races, which have been designed to minimize the management and scoring effort. For a change, on the first night in the Little Choptank River we are suggesting mixer raftups or gatherings with boats and people with whom you have not previously rafted. We hope you meet new friends and enjoy your evening.

The details for all dinners, races, rafts and games are explained in this guide. We are suggesting these activities as opportunities to enjoy, not as requirements. For some longer days with greater distances it may be wise for smaller boats to start out early.

We recognize the majority of the boats are cruisers and we have developed the cruise accordingly. However, our own John Pasley has designed three races for the cruise that should be challenging, and at the same time are meant to be friendly and add more fun to the cruise. Thanks John for putting together a great race package! We hope everyone with a Corinthian handicap will join in for at least one of the races just for the experience.

I personally and sincerely want to thank all the members of this year's Cruise Committee. Many members just kept volunteering when more work needed to be done. All their effort certainly exemplified the Corinthian spirit. Everyone on the cruise should acknowledge and thank the committee members. One person stands out above all for their tireless efforts. Linda Pasley again did us all proud for assembling and editing all the information in this guide. Also, she designed an on-line registration process. I thank her. I also thank Mary West for all her support and work in helping me personally define and put this cruise together. I was away for a vacation trip in March, asked for a volunteer to help keep things going in my absence and David Shinkfield was the man without hesitation. Many thanks, David. I want to thank all the port captains for taking full responsibility for all facets regarding their ports. Special thanks to Richard Allen, Andrew Barrett, David Shinkfield, Bill Dorsey, Denise Gill and Dick Tudan for their extra work to arrange dockage and the venues where the dinners and events will be. Many thanks to Derek Watridge, Dick Tudan, Denis Gill, Mary Yancey and John Pasley for mementos, games, and racing. Please check them out (listed later in this guide) and thank them.

I wish everyone a memorable and fun week.

Sincerely,
Don Andrew
Spring Cruise Chairman

***Welcome to the Corinthians Annapolis Fleet
2011 Spring Chesapeake Cruise***

The Cruise Committee hopes this will be a memorable week of cruising and fellowship with new and old friends. The members of the Cruise Committee will be available to lend a hand if you have any questions. Please ask any of the following persons:

Chairpersons:

Don Andrew – aboard “Waltz on Water”
David Shinkfield – aboard “Carpe Diem”

Port Hosts:

Richard Allen
Andrew Barrett
David Shinkfield – aboard “Carpe Diem”
Bill Dorsey – aboard “Misty”

Committee Members:

Mary West – aboard “First Point of Aries” –Advisor
Tom Dilenschneider – aboard “Sylestial Star” – Advisor

John Pasley – aboard “INSSA” – Race Chair
Mary Yancey – aboard “FORTUNA” – Race Committee
Derek Watridge – aboard “Stella Maris” - Mementos
Denise Gill – aboard “First Point of Aries” – Fun and Games
Dick Tudan – aboard “Spring Moon” – Fun and Games
Linda Pasley – aboard “INSSA” – Cruise Program Book
and Registration

General Cruise Notes

While boating is great, boats are small places to live. To reduce “cabin fever” the cruise itinerary has been prepared to provide opportunities to go ashore giving skippers and crew space and time alone. We also encourage crew to pursue opportunities to sail for a day on another boat. Please be sure not to leave your host skipper short handed and mention your wishes in advance for the benefit and enjoyment of all concerned.

The Corinthians crewing activities are strictly amateur. No fees may be charged or paid for the time involved in crewing or ferrying. It is important that skippers and crew discuss and understand all financial arrangements concerning expenses at the beginning of the Cruise. Crew are expected to pay their share of the expenses including provisioning, slip fees etc. In the days when cash was king, a crew member would be elected to be the paymaster and manage a cash kitty on behalf of all on board. Today when plastic seems to rule some equitable arrangement of sharing the tabs may work. Expense sharing applies to everyone on the Cruise so agree an approach upfront to avoid any bad feeling later.

Skippers' Meeting

The first fleet communications will occur at the Skippers' Meeting at Calvert Marina, Solomon Island at 1730 hours on Sunday, May 15, 2011.

Communications

Recommended we monitor VHF Channel 16, then change to Channel 69 which will be used for all official Corinthians & Little Ship Club Business during the Cruise. Monitor it whenever possible.

There will be a daily radio Cruise Rendezvous followed by Race Committee announcements at 0815 on Channel 69 in order to communicate information of importance to the fleet.

For individual communications with other fleet boats please switch to another channel.

FYI – As required by USCG, Bridges monitor VHF Channels 13 and 16. Ships monitor VHF Channel 13.

If you must leave the fleet, or rejoin the Cruise later in the week, please hail Don Andrew aboard “Waltz on Water” or David Shinkfield aboard “Carpe Diem” by VHF Channel 16 as indicated above, or in person. Call Don at 443/521-0066 or David at 609/731-3899 and leave a message if crew is not available to answer the telephone or respond by radio.

Harbor Starts

The Corinthians traditionally leave a harbor during cruises in parade formation, following the yacht which flies the “Great Flag.” The Harbor Start will be led by the Fleet Captain or her designee. Just prior to the time set for the Harbor Start, the designated yacht, flying the Great Flag, will circle the harbor, proceed to the head of the harbor, and start the parade. As the “Great Flag” passes your location, take your place in a double line (single line in a tight harbor) behind the last yacht in the parade. The time of the Harbor Start and the skipper and yacht which will fly the “Great Flag” will be announced during the daily radio Rendezvous.

Please display your Corinthians burgee.

Rafting

Rafting with as many different boats as you can at the end of each day of racing/cruising for conversation, cocktails, companionship, conviviality, and tall tales of the sea, is an excellent way to renew friendships and make new friends. Please contact the skipper of the boat with which you would like to raft. Please use your lines and fenders as indicated by the host boat. Do not take offense if the skipper declines your request. A number of factors such as boat size, ground tackle, weather conditions, plans to move or raft with another boat may be applicable. Please follow the instructions of the Harbor Host or the Harbormaster at the various port locations where necessary. Enjoy.

Note:

Sources for charts, and general information about navigation, directions, anchorages etc. included in The Corinthian Cruise Program Guide are from Boating Safety, the Mid-Atlantic Waterway Guide, Guide to Cruising Chesapeake Bay and from the Internet. These are shown as general information and not for navigation. Every skipper is responsible for the safe operation and navigation of his or her vessel.

Emergency Procedure Information:

Marine Distress Procedure for Major Emergency

- Select Radio: VHF channel 16. Issue distress call: “*Mayday-Mayday-Mayday*”
- Identify your vessel by ID and ship’s name _____
- Give your location, citing nearby navigation aids or landmarks
or GPS location _____
- State the nature of the emergency, _____
- number of persons aboard _____
- and conditions of injured (if any) _____
- Estimate seaworthiness of ship _____ and briefly describe it
(length, _____ type, _____ color, _____ hull _____)
- State you will be listening on VHF channel 16 and conclude your message, “**This is [ship name or call sign] over.**”
- Follow instructions received from the Coast Guard operator.
- **If you receive no reply, repeat your message.**

For Boating Emergency only dial the Coast Guard: dial *CG on a mobile phone.

Any boating accident resulting in death or significant injury, major damage to the boat or loss of the boat, must be reported to the appropriate government agency. **In Maryland:**

Natural Resources Police, 580 Taylor Ave., Annapolis, MD 21401; 410/260-8880

U.S. Coast Guard Stations:

Annapolis, MD 410/267-8108

St. Inigoes, MD 301/872-4345

Stillpond, MD 410/778-2201

For Medical Emergency dial 911 on a cellular phone

Medical: Ann Arundel Medical Center, Emergency Room telephone number is 443/481-1200
2001 Medical Parkway (next to the Annapolis Mall) – take Jennifer Road

*Note: In some areas, mobile providers have established a special code (*CG) which, if you are in range, will connect you directly to a Coast Guard Operations Center*

The Coast Guard does not advocate mobile phones as a substitute for the regular maritime radio distress and safety systems recognized by the Federal Communications Commission and the International Radio Regulations -- particularly VHF maritime radio. However, mobile phones can have a place on board as an added measure of safety.

Mobile phones generally cannot provide ship to ship safety communications or communications with rescue vessels. If you make a distress call on a cellular phone, only the one party you call will be able to hear you.

Locating a mobile caller is hard to do. If you don't know precisely where you are, the Coast Guard will have difficulty finding your location on the water.

Emergency Contact Information

We strongly recommend that the skipper and crew on each vessel complete this page at the start of the cruise and have the information readily available should a problem arise.

Skipper Name:

In an emergency contact:

Phone:

Relationship:

Medications:

Swim:

Yes

No

Current CPR

Yes

No

Name:

In an emergency contact:

Phone:

Relationship:

Medications:

Swim:

Yes

No

Current CPR

Yes

No

Name:

In an emergency contact:

Phone:

Relationship:

Medications:

Swim:

Yes

No

Current CPR

Yes

No

Name:

In an emergency contact:

Phone:

Relationship:

Medications:

Swim:

Yes

No

Current CPR

Yes

No

Name:

In an emergency contact:

Phone:

Relationship:

Medications:

Swim:

Yes

No

Current CPR

Yes

No

Name:

In an emergency contact:

Phone:

Relationship:

Medications:

Swim:

Yes

No

Current CPR

Yes

No

2011 Chesapeake Spring Cruise

One-Page Summary

Date	Destination	Distance, NM	Evening	Phone	VHF Hail	Race	Moorings	Slips	Launch	Fuel	Water	Ice	Groceries	Showers	Pumpout	Discharge
Saturday, May 14	Little Choptank River, Hudson Creek	31 from Annapolis	At anchor or Rafted up	No Facilities		X	X	X	X	X	X	X	X	X	X	X
Sunday, May 15	Calvert Marina, Solomons, MD	27	Cocktails/Dinner at Back Creek Bistro	Calvert Marina 410/326-4251		Y	X	Y	X	Y	Y	Y	NEAR		Y	
Monday, May 16	Potomac River, Smith Cr./Jutland Cr.	26	Anchor or Point Lookout Marina	301/872-5000		X	X	Y	X	Y	Y	Y	?	Y	Y	
Tuesday, May 17	Breton Bay, Leonardtown Wharf	21	Anchor or town wharf (shallow)	Dinghy to wharf, small town		Y	X	small	X	?	?	?	?	?	?	
Wednesday, May 18	St Mary's River, Horseshoe Bend	25	Parish Hall Group Dinner Anchor/Raft	Dinghy to shore		Y	X	X	X	X	Y	X	X	X	X	
Thursday, May 19	lay day, St Mary's	0	Anchor/Raft	Dinghy to shore		X	X	X	X	X	Y	X	X	X	X	
Friday, May 20	Patuxent River, Mill Creek upstream	37	Anchor/Raft	Visit Back Creek in Solomons for any needs		X										
Saturday, May 21	Herrington Harbor South	36	Award Dinner at H. Harbor South	410/741-5100 X120		X	X	Y	X	Y	Y	Y	Y	Y	Y	

**Saturday
May 14**

*Cruising Distance from
Annapolis 31 nm*

From:
Home Ports

To:
**Little Choptank River
Hudson Creek**
38°34'18"N / 076°14'46"W

*Little Choptank River
Port Hosts:*

**Richard Allen
David Shinkfield**

Informal Raft



2010 Corinthian Cruise raft-up – © L.Pasley

Activities:

- | | |
|------|--|
| 1500 | Courtesy Radio Check-in
“The Corinthians” on VHF 69 |
| 1600 | Informal Raft Mixer |
| 1700 | Anchor / Raft in Hudson Creek |

Like most of the Little Choptank, Hudson Creek is a peaceful haven where you can sit on the deck of your boat and enjoy the birds and wildlife. Spring and fall are particularly pleasant for spying migratory ducks, geese and swans.

Casson Point on the northern shore of the river marks the entrance to Hudson Creek. Give green “7” a wide berth to avoid the shoaling off the point, and to miss shoaling east of the point, don’t head directly from “7” to “1” inside the mouth of the creek, but bear off slightly to starboard.

There’s a delightful place to spend the night just west of red daybeacon “2” in the cove formed by the curving arm of Casson Point with its sandy beach. When the moon rises over the trees and illuminates the sand and the water all around your boat, there’s nothing prettier on the Chesapeake.

**Sunday
May 15**

Cruising Distance 27 nm

**From:
Little Choptank River
Hudson Creek**

**To:
Calvert Marina, Solomons, MD
Call 410/326-4251
VHF Channel 16
38° 19' 50"N / 76° 27' 21"W**

Fuel, water, ice and pumpout are
available

Groceries nearby

Solomons Port Host:

Andrew Barrett

Race Day #1

***Cruise Dinner - Back Creek Bistro,
Calvert Marina, Solomons, MD***



Back Creek Bistro Deck in 2010 – © L. Pasley

Activities

- 0800 Colors**
- 0815 Fleet Announcements on VHF 69**
- 0830 Racing Announcements on VHF 69**
- 0945 Racing Yacht Rendezvous Check-in
on VHF 69**
- 1000 - 1010 10 Minute Race Start Window**
- 1300 Time Limit for Race**
- 1730 Skippers' Meeting – Back Creek Bistro**
- 1800 Cocktails / Dinner at Back Creek Bistro**

Race #1

**Hudson Creek to mouth of Choptank River
Length 8 nm**

The official clock for the race will be GPS time

Racers must honor marks as shown below:

Rendezvous

Fl G 2.5s 13 ft 3 M "5"

Start

Fl G 2.5s 13 ft 3 M "5"

R N "4"

Finish

R N "2"

S of Ragged Island in Little Choptank
S of Ragged Island in Little Choptank –
Bearing 030° to Starboard

2.5 MI S of Sharp's Island. **Keep mark to Port**

W of James Island at mouth of Choptank River. **Keep mark to Port**

***Please check in with the race committee by VHF 69 between the Rendezvous Time and the Start Time.
Please monitor VHF 69 from the start time until you finish or reach the time limit in case of shortened course.
If no Race Committee is present, take your own time when you are bearing 120° to port off R N "2",
passing within 2 boat lengths of the mark, note your time, and at the same time, announce your finish
when and as you bear 120° to port off R N "2" on VHF 69.***

**Monday
May 16**

Cruising Distance 30 nm

**From:
Calvert Marina, Solomons**

**To:
Point Lookout Marina
Smith Creek - Potomac
River
301/872-5000
VHF Channel 16
38° 05' 5" N / 76° 25' 3" W**

Docking Rate \$1.00 per foot

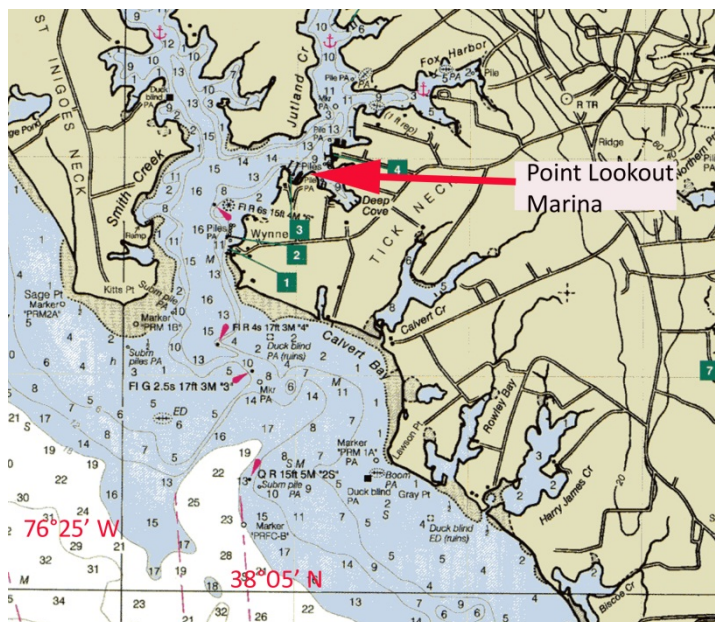
Fuel, water, ice, showers and
pumpout are available

Smith Creek Port Hosts:

**David and Jenny
Shinkfield**
aboard "Carpe Diem"

**Spinnakers Restaurant will
not be open on Monday.**

Dinner on your own



Activities

- 0800 Colors**
- 0815 Fleet Announcements on VHF 69**
- 0900 Harbor Parade**
- 1900 Dinner on your own**

The entrance into Smith Creek isn't all that tricky, but it is a bit narrow. The three entrance marks—red "2", green "3" and red "4"—form a mild S-turn. Once inside the entrance, you will find one more marker, "6", off the commercial docks at Wynne. Smith Creek heads directly north, carrying 15 feet or more of water which shoals gradually to 6-foot depths about two miles upstream.

North on Smith Creek in the mile or so from red "6" to its head there are no less than six delightful areas where the water has etched out small coves and tranquil niches, each with its own personality. Probably the most

protected anchorage on the creek is in the first cove to starboard past the mouth of Jutland Creek, which forks beyond its entrance. Here you'll be surrounded by tall trees and can rest in absolute calm. The charts clearly show the off-center entrance channel with 10-foot depths.

About a half-mile from Smith Creek's entrance, **Jutland Creek** branches off eastward before turning northward. This creek offers more anchoring options as well as the **Point Lookout Marina**.

**Tuesday
May 17**

Cruising Distance 25 nm

**From:
Potomac River
Smith Creek / Jutland Creek**

**To:
Leonardtown Wharf
38° 17.1' / 076° 38.5'**

Anchor or Town Wharf
(shallow)
Dinghy to Wharf

Leonardtown Port Host:

***Bill Dorsey
aboard "Misty"***

Race Day #2

See page 13

***for Leonardtown restaurants,
walking tour, Tudor Hall,
Waterfront Park information***



Activities

- 0800 Colors**
- 0815 Fleet Announcements on VHF 69**
- 0830 Racing Announcements on VHF 69**
- 0945 Racing Yacht Rendezvous Check-in on VHF 69**
- 1000 - 1010 10 Minute Race Start Window**
- 1430 Time Limit for Race**
- 1600 Tour Leonardtown (see page 13)**
- 1800 Dinner aboard or onshore**

Race #2

**Smith Creek to Breton Bay/Leonardtown Wharf
Length 11 nm**

*The official clock for the race will be GPS time
Racers must honor marks as shown below:*

Rendezvous and

Start

1 mile S of Smith Creek entrance –

Q R 15 ft 3 M "2" Bearing 140° to Port for Start of race

RG "5M" Fl 2+1 R 6s

S of the mouth of St Mary's River **Keep mark to Starboard**

Finish

Ragged Point Light, **Keep light well to Port**

Fl 6s 44 ft 9 M

Stay at least 10 boat lengths off this light, as it shoals up rapidly

If no Race Committee is present, take your own time when you are bearing 230° to port off Ragged Point Light, passing within 10 boat lengths of Light and at the same time, announce your finish when and as you bear 230° to port off Ragged Point Light on VHF 69.

CAUTION! Do not sail in less than 15 feet of water here. It shoals up very rapidly at the base of the light

Note that the Potomac River is a busy shipping channel

Extreme care is required to avoid ships, tugs, and barges. Commercial shipping has Right of Way at all times

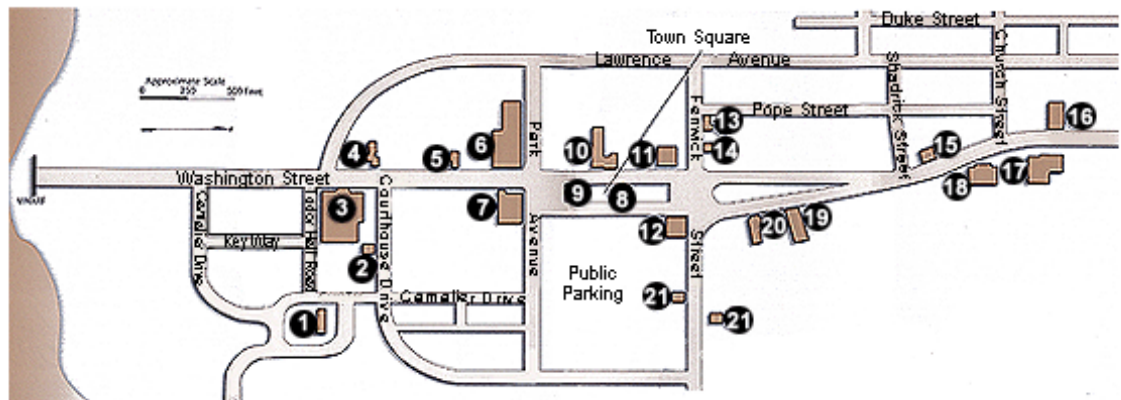
From: Smith Creek
To: Leonardtown Wharf

Anchorage: Anchor off Leonardtown Wharf ($38^{\circ} 17.1' / 076^{\circ} 38.5'$) and dinghy into the wharf. There is an unmarked channel with 8 to 10 ft. depths from Fl G 11 all the way to just off the wharf. Unconfirmed depths at the wharf are 4 to 5 ft. For a little more protection, just past Fl G 11 at the elbow of the channel, you can tuck into a quiet corner where you will find 10 ft. and a good holding bottom.

Facilities: There are no boating facilities at Leonardtown.

Activities: Tour the town on your own. The old town square can be reached by a short walk up the hill along Washington Street. A brochure giving a self guided tour of the old town can be found at website

Walking Tour of Historic Leonardtown



<http://www.smcm.edu/publications/PDF/walkingTour4web2.pdf>

Be sure to see “Tudor Hall” an old plantation house east of Washington Street along Tudor Hall Road.

Restaurants:

Those around the town square:

- El Cerro Grande – Mexican (301/997-0808)
- Ye Old Town Café – American (301/475-5151)
- Café des Artistes – upscale French (301-997-0500)

Up Washington Street from the square:

- The Front Porch – upscale American (301/997-1009)
- Oga’s Asian Cuisine (new not listed)

Off the square on Park Ave:

- Thompson’s Corner Kafe – Seafood (new not listed)

**Wednesday
May 18**

Cruising Distance 28 nm

**From:
Leonardtown
Breton Bay**

**To:
St. Mary's River
Horseshoe Bend
38° 11' 75"N / 76° 26' 4"W**

Water, is available

St. Mary's Port Host:

***Bill Dorsey
aboard "Misty"***

Race Day#3

***See page 15. Group Dinner
at St. Mary's College Parish Hall
identified as #6 on the college
map on page 16***



Breton Bay

Activities

- 0800 Colors**
- 0815 Fleet Announcements on VHF 69**
- 0830 Racing Announcements on VHF 69**
- 0945 Racing Yacht Rendezvous Check-in
on VHF 69**
- 1000 - 1010 10 Minute Race Start Window**
- 1400 Time Limit for Race**
- 1800 Parish Hall Dinner – see page 15-16**

Race #3

**Smith Creek to Breton Bay/Leonardtown Wharf
Length 10.2 nm**

The official clock for the race will be GPS time

Racers must honor marks as shown below:

Rendezvous

Fl R 4s 16 ft 3M

Start

Fl R 4s 16 ft 3M

Finish

RW "B" Mo (A) WHISTLE

Mouth of Breton Bay, S of Huggins Point

Mouth of Breton Bay, S of Huggins Point

Bearing 150° to Port

S of Piney Point. **Keep to Port**

***If no Race Committee is present, take your own time when you bear 50° to port off RW "B" Mo(A) Whistle,
passing within 2 boat lengths of the mark.***

Note that the Potomac River is a busy shipping channel

Extreme care is required to avoid ships, tugs, and barges. Commercial shipping has Right of Way

From: Leonardtown
To: Saint Mary's City

Anchorage: Anchor in Horseshoe Bend just off Saint Mary's College (38° 11.75'; 76° 26.4'). We have permission to use the college's dock for our dinghies (Waterfront Director Mr. Adam Werblow).

As you approach the series of docks there is a large dock on the right where a few keelboats are in slips, behind them are docks for the college's racing dinghies. Stay to the left of this large dock where you will see another set of docks on the left with more of the college's racing dinghies and a boat launching ramp. Coming out from the ramp are some floating docks where you can tie up your dinghy.

Facilities: There are no boating facilities at Saint Mary's City/College.

However, just down the river 2-3 NM on the west side is Carthagen Creek with a full service marina just up the creek – Dennis Point Marina (301/994-2288).



Carthagen Creek - Dennis Point Marina

Activities:

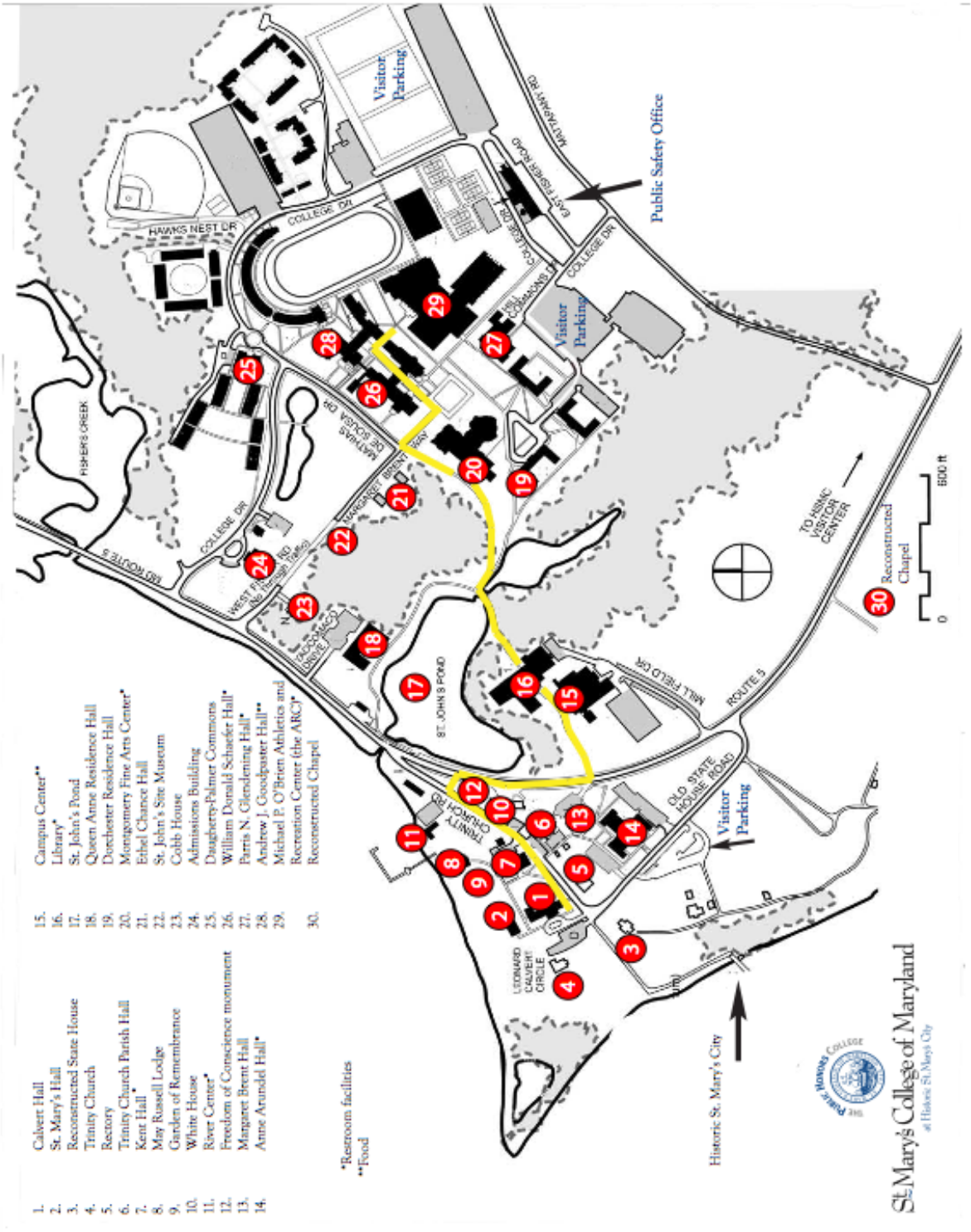
If you have time before dinner take a walk around the college – see college map on page 16.

Cocktails aboard before Dinner at Trinity Church's Parish Hall.

Gather at the Parish Hall just up the street from the college's Boating Center at around 1830 for dinner.

Bring your own wine.

Dinner served at 1900 hours.



- | | |
|------------------------------------|---|
| 1. Calvert Hall | 15. Campus Center** |
| 2. St. Mary's Hall | 16. Library* |
| 3. Reconstructed State House | 17. St. John's Pond |
| 4. Trinity Church | 18. Queen Anne Residence Hall |
| 5. Rectory | 19. Dorchester Residence Hall |
| 6. Trinity Church Parish Hall | 20. Montgomery Fine Arts Center* |
| 7. Kent Hall | 21. Ethel Chance Hall |
| 8. May Russell Lodge | 22. St. John's Site Museum |
| 9. Garden of Remembrance | 23. Cobb House |
| 10. White House | 24. Admissions Building |
| 11. River Center* | 25. Daugherty-Palmer Commons |
| 12. Freedom of Conscience monument | 26. William Donald Schaefer Hall* |
| 13. Margaret Brent Hall | 27. Parris N. Glendon Hall* |
| 14. Anne Arundel Hall* | 28. Andrew J. Goodpaster Hall** |
| | 29. Michael P. O'Brien Athletics and Recreation Center (the ARC)* |
| | 30. Reconstructed Chapel |

*Restroom facilities
 **Food



St. Mary's College of Maryland
 at Historic St. Marys City

**Thursday
May 17**

Lay Day

**St. Mary's River
Horseshoe Bend**

Anchor in Horseshoe Bend
just off Saint Mary's
College 38^o 11.75' / 76^o
26.4'

St. Mary's River Port Host:

Bill Dorsey
aboard "Misty"

Lay Day



Activities

0800 Colors
0815 Fleet announcements on VHF 69
**1830 Dinner on your own or
maybe at the college**

Anchorage: Anchor in Horseshoe Bend just off Saint Mary's College (38^o 11.75'; 76^o 26.4').

Facilities: There are no boating facilities at Saint Mary's City/College. However, just down the river 2-3 NM from St. Mary's City on the west side is Carthagena Creek with a full service marina just up the creek – Dennis Point Marina 301/994-2288

Lay Day Suggested Activities: Free Day

- Tour the college (see yesterday's map of the college – page 16).
- Tour the 1700-century reproduction of colonial Saint Mary's City and talk to the actors representing the inhabitants (fee: \$10 adults, \$9 adults 60+). See today's Map – page 18 and 19.
- See the replica of the Dove, which brought the original settlers to Maryland, and talk to the crew. The Dove can be found along the shore of Saint Mary's City shown on today's map (part of St Mary's City exhibitions).
- Visit Saint John's active archaeological site and museum where the remains of the Van Sweringen Inn is being excavated.
- The college gym (fee) and cafeteria are normally open to the public, but may be closed between semesters. So far I have not been able to confirm their status.

HISTORIC ST. MARY'S CITY





Print House

St. Mary's River



- Restrooms
- Water fountain
- Picnic area
- Parking

The distance from the Visitor Center to the State House is about one-half mile.

Visitor paths and historic roads are color-coded! The lighter color pavement signifies the location of original 17th-century roads. The darker color denotes modern paths. PLEASE:

- Picnic in designated areas.
- Take photographs! (Commercial photographers will need prior approval.)
- Pets on leashes are welcome on the trails and paths; however no pets are allowed at the Plantation because of farm animals.

PLEASE DON'T:

- Pick fruits, flowers, or leaves.
- Collect artifacts.
- Feed the animals.

PHONE NUMBERS:

Visitor Center 240-895-4990

Shop 240-895-2088

**Friday
May 15**

Cruising Distance 40 nm

**From:
St. Mary's**

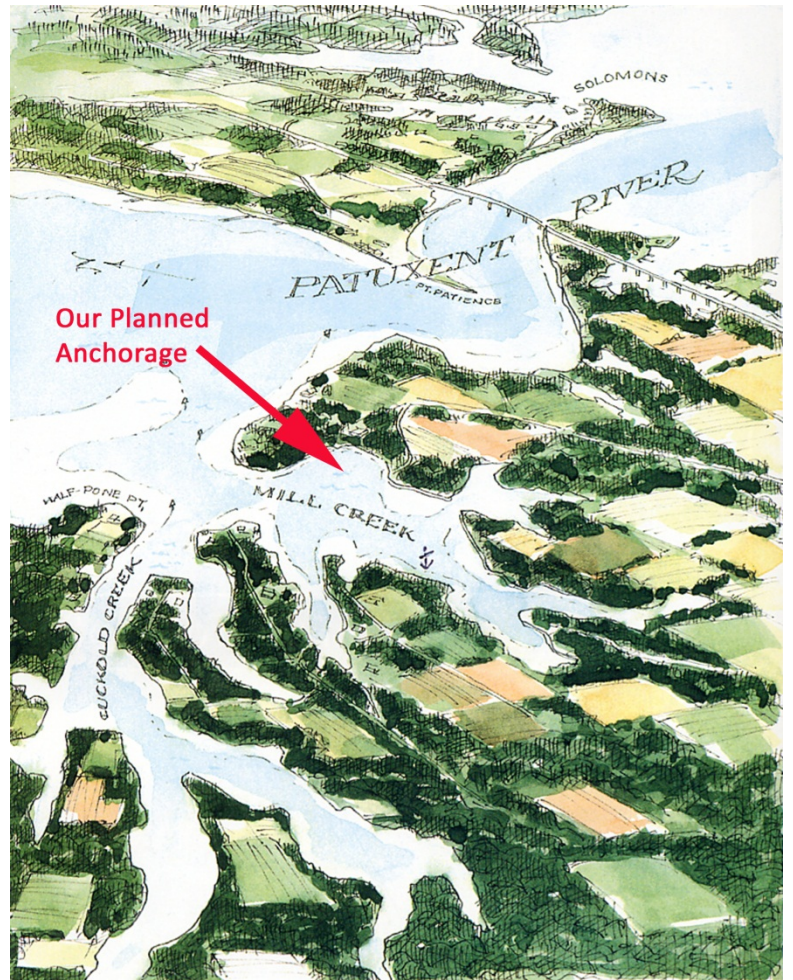
**To:
Patuxent River
Mill Creek**
38° 19' 50"N / 76° 27' 21"W

Visit Back Creek in Solomons
for any needs

Mill Creek Port Hosts:

**David and Jenny
Shinkfield**
aboard "Carpe Diem"

Raft up or Dinner on your own



Activities

- 0800 Colors**
- 0815 Fleet announcements on VHF 69**
- 0900 Harbor Parade**
- 1900 Raft up or Dinner on your own**

Facilities: Our destination for the Friday evening is Mill Creek about five miles upstream from Drum Point. Cruising up the Patuxent, you'll pass under the Governor Thomas Johnson Bridge. The bridge has a 140-foot clearance. Farther up the river, you'll notice in rounding Point Patience a marked depth of 137 feet—one of the deepest points on the Chesapeake Bay. The entrance to Mill Creek, a very pretty anchorage, is below Half Pone Point, between the Patuxent's two lighted marks "9" and "11" along the western side of the channel. Once you've made the turn to port into its wide entrance and proceed past dayboards "3" and "4", Mill Creek is the prong that turns southwest. Drop anchor in the little bay that has 12 feet of water with a good holding bottom.

**Saturday
May 21**

Cruising Distance 36 nm

**From:
Patuxent River
Mill Creek**

**To:
Herrington Harbor South,
MD**

38° 44' 12"N / 076° 32'
20"W

**Dockmaster
410/741-5100 ext 120
VHF 9 or 16**

\$2.25 per foot + electric
Boat US members - 25%
discount on dockage

Fuel, water, ice, laundry and
pumpout are available

*Herrington Harbor South
Port Hosts:*

***Denise Gill
aboard
"First Point of Aries
and
Dick Tudan
aboard "Spring Moon"***

***Cocktails and Awards Dinner
on the South Dock Lawn***



Herrington Harbor South

Activities:

0800 Colors
0815 Fleet Radio Announcement on VHF 69
0900 Harbor Parade
1800 Cocktails (Gentlemen, jackets and tie)
1900 Awards Dinner at Herrington Harbor South

Marina Approach:

Visit www.herringtonharbour.com for more information

Herrington Harbour South is located on the western shore of the Chesapeake Bay. Find FL G 1 PA, then set a magnetic course of approximately 262 degrees magnetic and you should see QK FLG1, which marks the entrance by the jetties.

Leave the green marker 1 to port and go between the jetties.

Proceed into the channel and line up on the range markers.

There is plenty of water in the channel approach and a reported seven feet of water in the channel and at the docks at mean low water.

RACING NOTES:

The racing will be conducted on this cruise without a formal, anchored committee boat. Instead, to avoid a crowded starting line, racers may start at any time within the ten minutes following the published start time. Please check in with the race committee by radio between the Rendezvous Time and the Start Time each day if you are racing. The official clock will be GPS time. If no GPS is on board your boat, note which watch you are using to record your starting and finishing times and coordinate your time with the Race Committee's official watch (the GPS) during check-in each day.

The bearing given with the start mark represents the starting line. You will cross that line as you start, so take your time when the start or finish mark is on that bearing.

The Race Committee will monitor VHF 69. As you pass close abeam of the starting mark (within two boat lengths), contact the "Corinthian Race Committee" to tell them that you have started. As you pass close abeam of the finishing mark (within two boat lengths), contact "Corinthian Race Committee" to tell them that you have finished. Note your starting time and finish time as well in case the radio is jammed with other traffic, and be sure the Race Committee acknowledges your transmittals of that information.

Flag signals will not be used, but the safety rules will still apply.

In the event of very light air, dangerously heavy weather, or just for the fun of it, the Race Committee may elect to shorten the course or cancel a day's racing. Please continue to monitor VHF 69 from the start time until you finish or reach the time limit in case of a shortened course or cancellation of racing for safety reasons. We have chosen bearings that will give a slight advantage to those passing the finishing mark close aboard. This provides racers with an added incentive to keep within the two boat lengths of the finish marks.

SAFETY FIRST:

In general, boats on starboard tack have the right of way over port tack boats. When on the same tack, the leeward boat has the right of way, and the windward boat must yield. In the Corinthian spirit, in a tight situation, back off or pass astern rather than risk a collision that could damage someone's boat, injure people, and spoil everyone's enjoyment.

Engines may not be used from five minutes before the start. They may be running and out of gear for safety or refrigeration, but people will be suspicious.

Competitors are strongly urged to post a lookout on the bow during the start to help avoid accidents, and are urged to gracefully yield right of way when necessary to avoid close calls. A few seconds at the start is not worth the risk of damage or injury.

PROTESTS:

A protesting yacht must immediately hail the offending yacht and promptly display a red penalty flag on the backstay at the time of offense to provide the offender the opportunity to take measures as prescribed in the racing rules. The protesting yacht must notify the Race Committee immediately after finishing of their intent to protest. The protesting yacht must also notify the Race Committee in writing no later than 1800 hours on the day of the race, describing the incident and specific rules violated. Failure to comply with any or all of these requirements will invalidate any protest. Protest hearings, if necessary, will be held from 0600 to 6:00 AM on the steps of the Supreme Court on the day following the race, at the protestor's expense.

WHO IS WHO ON THE CRUISE

Alphabetical Roster by Name

A = Annapolis Fleet

P = Philadelphia Fleet

Last Name	First Name	Boat Cell #	Registered as:	Fleet	Yacht Name
Andrew	Don	443/521-0066	Skipper	A	Waltz on Water
Barrett	Andrew		Drive-along	A - Past Fleet Captain	
Barrett	Ann		Drive-along		
Bigden	Julian		Skipper	A	mojo
Bigden	Jill		Crew		mojo
Blount	Lawrence	410/490-4412	Skipper	A - Past Fleet Captain	Corsica Lady
Blount	Susan		Crew		Corsica Lady
Burke	Louise		Crew	A	Avalon
Cadwalader	Gardner		Crew		China Girl
Callahan	Brian	443/851-4000	Skipper	A	Sails Call
Callahan	Marjorie		Crew		Sails Call
Carmody-Duvall	Patricia	410/703-2533	Crew	A	
Clay	Reginald	410/991-3591	Skipper	A	Elena Paige
Clay	Kay		Crew		Elena Paige
Collins	Dean	301/801 9051	Crew	A	
Comly	Cherie		Crew		Halcyon
Cream	Greg		Crew	P	Scrimshaw
Cully	Jerry	610/256-8793	Skipper	P	Scrimshaw
Cully	Christine		Crew	A	Scrimshaw
de Neergaard	Bill		Crew	Past Master	Whitefin
de Neergaard	Helene		Crew		Whitefin
Denny, Jr.	William	484/942-4865	Drive-along	P	
Dickson	John A.	484/431-3010	Skipper	Prospective Member	Serendipity
Dickson	Noel		Crew		Serendipity
Dilenschneider	Thomas	610/324-6349	Skipper	P - Fleet Captain	Sylestial Star
Dilenschneider	Sylvia		Crew		Sylestial Star
Di Vito	Gary		Skipper	P – Past Fleet Captain	China Girl
Dorsey	William	240/431-3448	Skipper	A - Past Fleet Captain	Misty
Gardner	John	410/693-3490	Drive-along	A	
Gill	Denise	301/674-1108	Skipper	A	First Point of Aries
Hall	David	610/212-7013	Skipper	P	Rafiki
Hall	Ros		Crew		Rafiki
Halvorsen	Martin	410/739-0719	Skipper	A	Avalon
Herron	John		Crew	P	China Girl
Kraemer	Harry		Crew		Halcyon

Kuba	Deb			Prospective Member	
Larsen	Carl	516/528-8422	Skipper	Past Master, A	Whitefin
Larsen	Tulinda		Crew		Whitefin
Long	Linda		Crew		Melody II
Mason	Anthony	561/400 8983	Skipper	Little Ship Club Member	Tomia
Mason	Celia		Crew	Little Ship Club Member	Tomia
Meneely	Henry	410/279-0308	Skipper	A	INSSA
Meneely	Patricia		Crew		INSSA
Noren	Mary Kay		Crew		Waltz on Water
Noyes	Androus	410/533-3280	Skipper	A	Sweet Caroline
Noyes	Carolie		Crew		Sweet Caroline
Pasley	Linda	301/801-1027	Crew	A	INSSA
Pasley	John		Crew	A - Past Fleet Captain	INSSA
Pyron	Cynthia	410/200-6157	Crew	A	Carpe Diem
Quirk	Peter	410/271-5012	Crew	A - Past Fleet Captain	Stella Maris
Quirk	Susan		Crew	Drive-along	
Rittenbaugh	Corky	610/496-1552	Skipper	P	Oasis
Rittenbaugh	Deb		Crew	A	Oasis
Rockhill	Lyn		Crew		FORTUNA
Ross	Neil	267/337-1181	Skipper	P	Halcyon
Seaver	W. (Leigh)	202/997-0397	Crew	A - Drive along	
Seaver	Carol		Crew	Drive along	
Shinkfield	David	609/731-3899	Skipper	P	Carpe Diem
Shinkfield	Jenny		Crew		Carpe Diem
Stavely	Catherine	410/703-6438	Crew	A - Past Fleet Captain	FORTUNA
Stoner	Thomas	610/368-7077	Skipper	P	Watermark
Stoner	Mary Sue		Crew		Watermark
Sundman	Kent		Crew		Scrimshaw
Tudan	Richard	410/353-6959	Skipper	A - Past Fleet Captain	Spring Moon
Tudan	Valerie		Crew		Spring Moon
Watridge	Derek	410/507-0464	Skipper	A - Past Fleet Captain	Stella Maris
Watridge	Penny		Crew		Stella Maris
Warman	Bryan	410/353-2343	Skipper	A	Melody II
West	Mary		Crew	A - Fleet Captain	First Point of Aries
Wilson	Frederick	610/420-9949	Skipper	Past Master, P	Weetamo
Wilson	Nancy		Crew		Weetamo
Woermann	Konrad	410/353-3164	Skipper	A	FORTUNA
Wrightson	Barry		Crew		Elena Paige
Wrightson	Veronica		Crew		Elena Paige
Yancey	Mary		Crew	A	FORTUNA

WHO IS WHO ON THE CRUISE
Alphabetical List by Yacht Name

Yacht Name	Last Name	First Name	Boat Cell #	Registered as:	Fleet
Avalon	Halvorsen	Martin	410/739-0719	Skipper	A
	Burke	Louise		Crew	A
Carpe Diem	Shinkfield	David	609/731-3899	Skipper	A
	Shinkfield	Jenny		Crew	
	Pyron	Cynthia	410/200-6157	Crew	A
China Girl	Di Vito	Gary		Skipper	P – Past Master
	Herron	John		Crew	P
	Cadwalader	Gardner		Crew	
Corsica Lady	Blount	Lawrence	410/490-4412	Skipper	A - Past Fleet Captain
	Blount	Susan		Crew	
Elena Paige	Clay	Reginald	410/991-3591	Skipper	A
	Clay	Kay		Crew	
	Wrightson	Barry		Crew	
	Wrightson	Veronica		Crew	
First Point of Aries	Gill	Denise	301/674-1108	Skipper	A
	West	Mary		Crew	A - Fleet Captain
FORTUNA	Woermann	Konrad	410/353-3164	Skipper	A
	Rockhill	Lyn		Crew	
	Stavely	Catherine	410/703-6438	Crew	A - Past Fleet Captain
	Yancey	Mary		Crew	A
Halcyon	Ross	Neil	267/337-1181	Skipper	P
	Kraemer	Harry		Crew	
	Comly	Cherie		Crew	
INSSA	Meneely	Henry	410/279-0308	Skipper	A
	Meneely	Patricia		Crew	
	Pasley	Linda	301/801-1027	Crew	A
	Pasley	John		Crew	A - Past Fleet Captain
Melody II	Warman	Bryan	410/353-2343	Skipper	A
	Long	Linda		Crew	
Misty mojo	Dorsey	William	240/431-3448	Skipper	A - Past Fleet Captain
	Bigden	Julian		Skipper	A
	Bigden	Jill		Crew	
Oasis	Rittenbaugh	Corky	610/496-1552	Skipper	P
	Rittenbaugh	Deb		Crew	A
Rafiki	Hall	David	610/212-7013	Skipper	P
	Hall	Ros		Crew	

Sails Call	Callahan	Brian	443/851-4000	Skipper	A
	Callahan	Marjorie		Crew	
Scrimshaw	Cully	Jerry	610/256-8793	Skipper	P
	Cully	Christine		Crew	A
	Cream	Greg		Crew	P
	Sundman	Kent		Crew	
Serendipity	Dickson	John A.	484/431-3010	Skipper	A - Prospective Member
	Dickson	Noel		Crew	
Spring Moon	Tudan	Richard	410/353-6959	Skipper	A - Past Fleet Captain
	Tudan	Valerie		Crew	
Stella Maris	Watridge	Derek	410/507-0464	Skipper	A – Past Fleet Captain
	Watridge	Penny		Crew	
	Quirk	Peter		Crew	A – Past Fleet Captain
Sweet Caroline	Noyes	Androus	410/533-3280	Skipper	
	Noyes	Carolie		Crew	A
Sylestial Star	Dilenschneider	Thomas	610/324-6349	Skipper	P - Fleet Captain
	Dilenschneider	Sylvia		Crew	
Waltz on Water	Andrew	Don	443/521-0066	Skipper	A
	Noren	Mary Kay		Crew	
Watermark	Stoner	Thomas	610/368-7077	Skipper	P
	Stoner	Mary Sue		Crew	
Weetamo	Wilson	Frederick	610/420-9949	Skipper	Past Master, P
	Wilson	Nancy		Crew	
Whitefin	Larsen	Carl	516/528-8422	Skipper	Past Master, A
	Larsen	Tulinda		Crew	
	de Neergaard	Bill		Crew	Past Master
	de Neergaard	Helene		Crew	
	Barrett	Andrew		Drive-along	A - Past Fleet Captain
	Barrett	Ann		Drive-along	
	Carmody-Duvall	Patricia	410/703-2533	Crew	A
	Collins	Dean	301/801 9051	Crew	A
	Denny, Jr.	William	484/942-4865	Drive-along	P
	Gardner	John	410/693-3490	Drive-along	A
	Kuba	Deb		Drive-along Prospective Member	
Tomia	Mason	Anthony	561/400 8983	Visiting LSC Skipper	LSC Member London UK
	Mason	Celia		Visiting LSC Crew	LSC Member
	Seaver	W. (Leigh)	202/997-0397	Drive-along	A
	Seaver	Carol		Drive-along	

*2010 Chesapeake Spring Cruise
Photos*



© L. Pasley